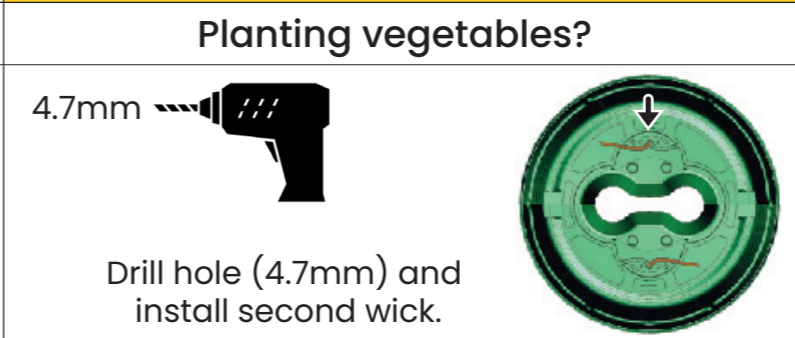
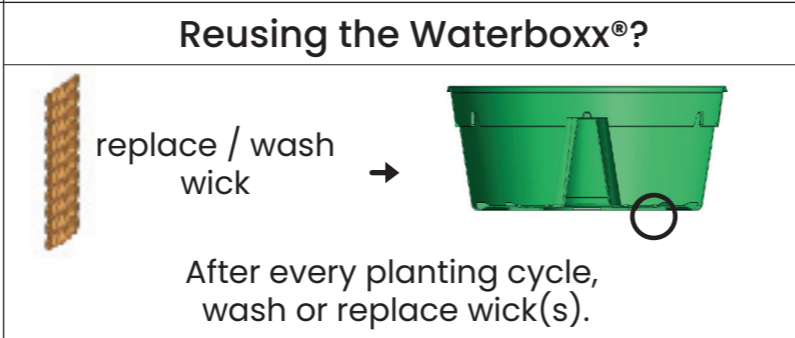
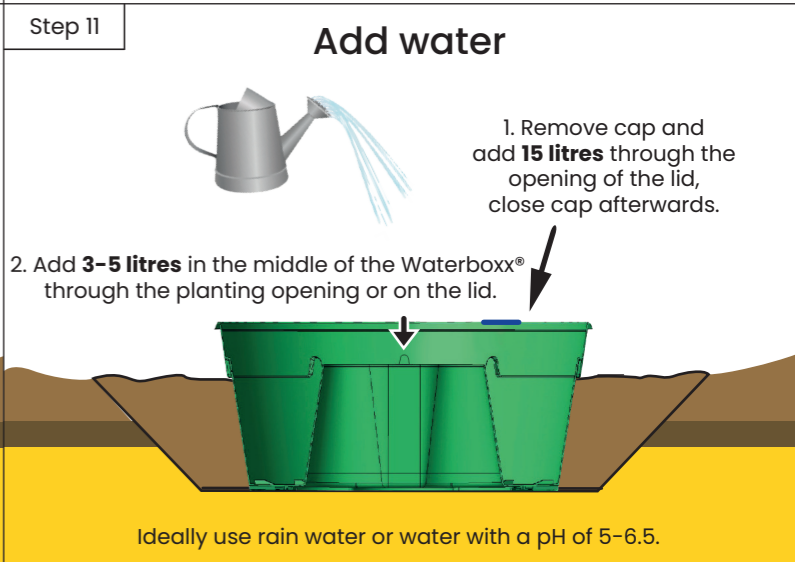
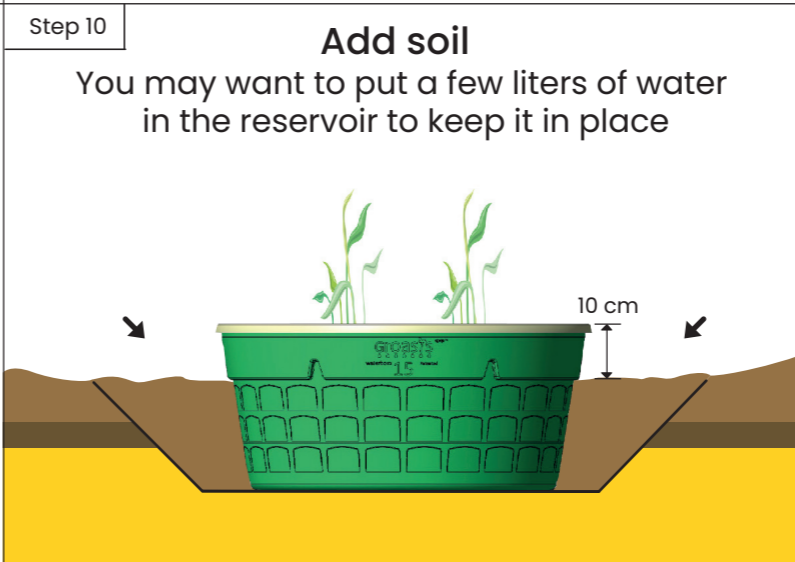
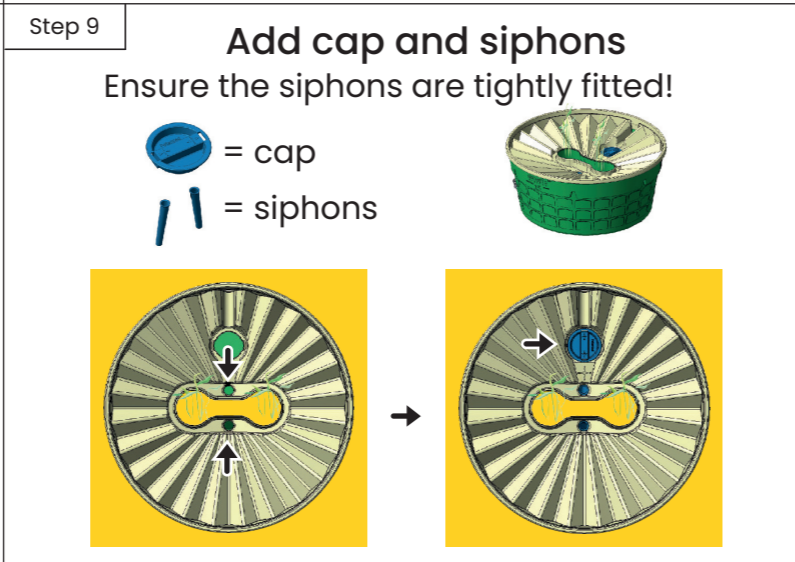
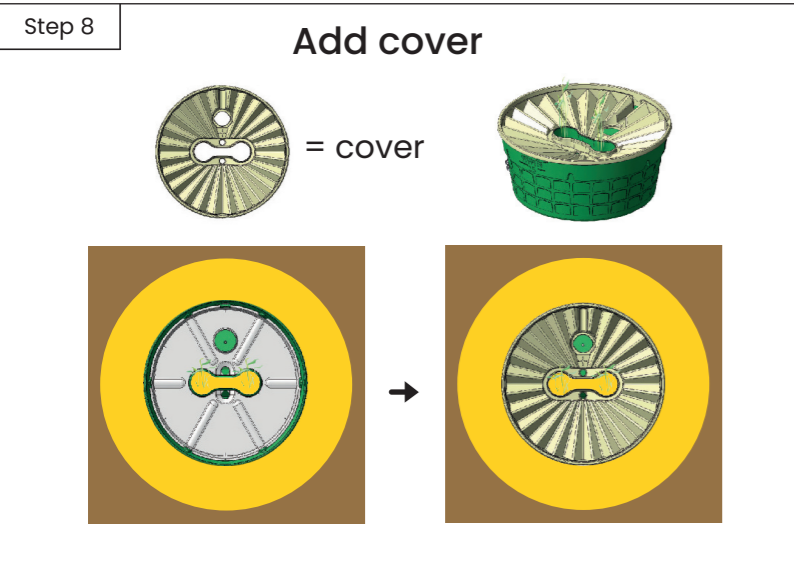
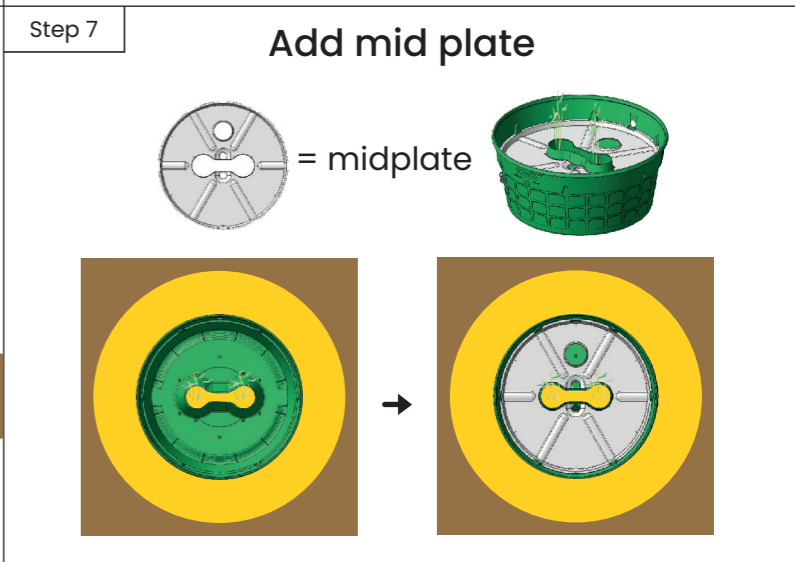
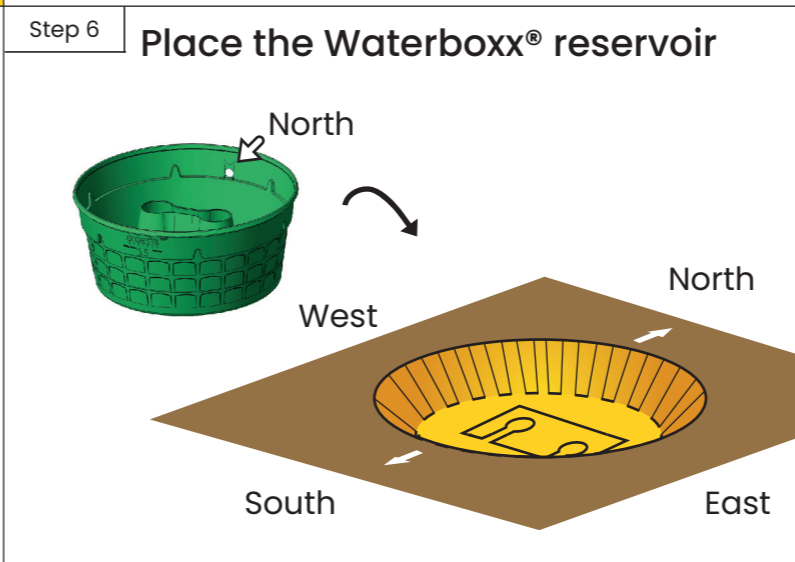
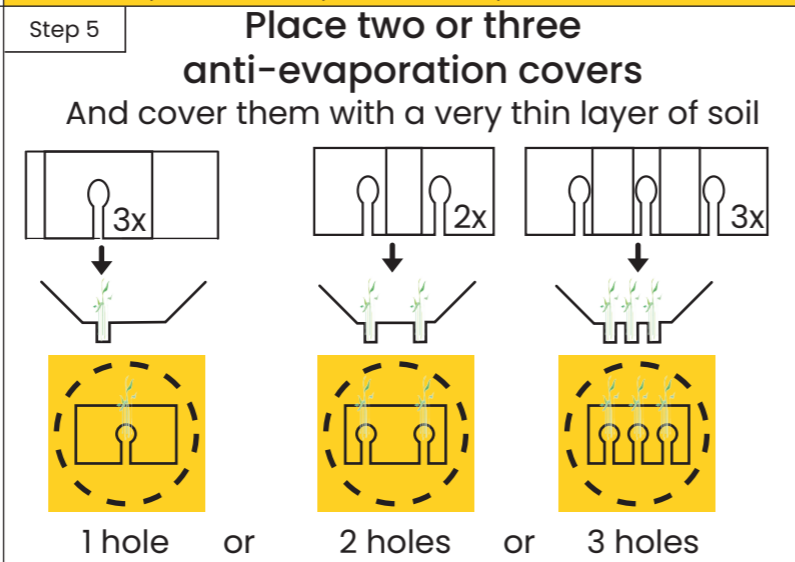
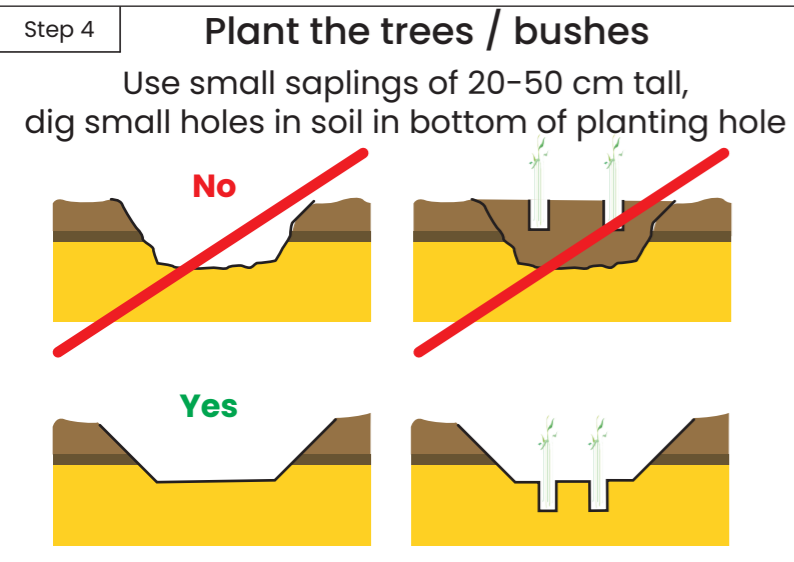
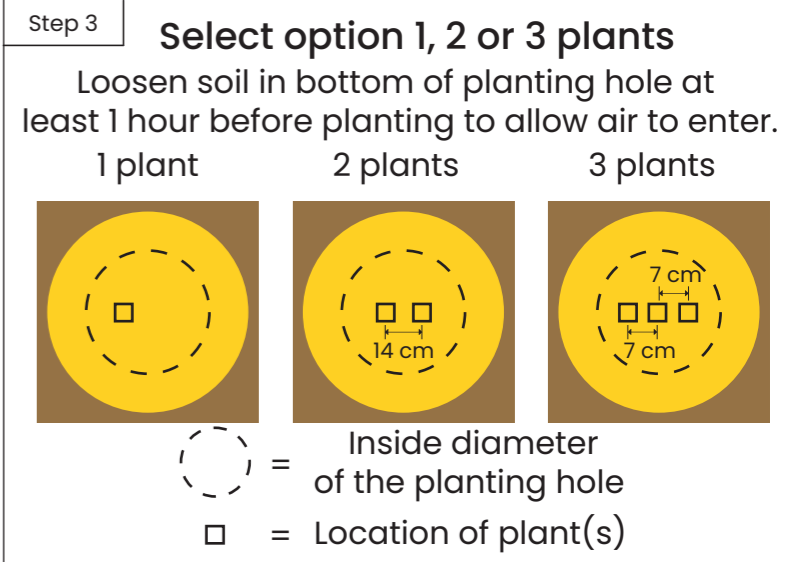
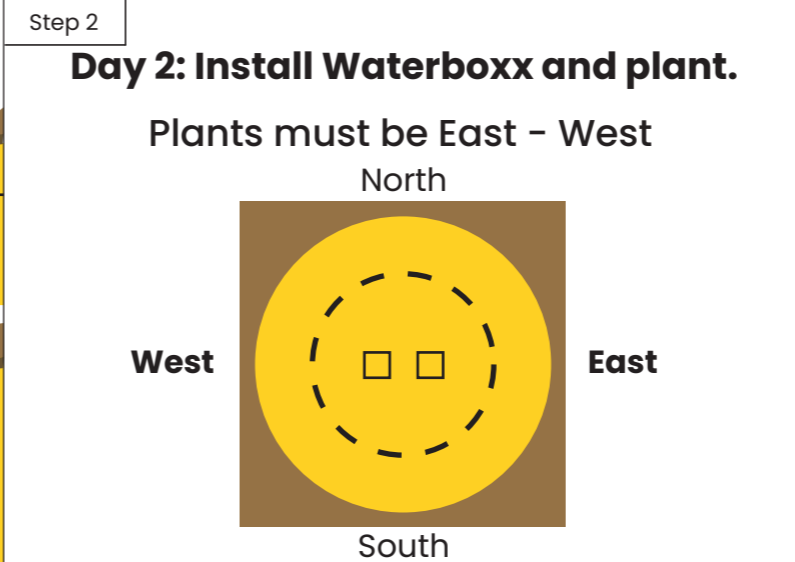
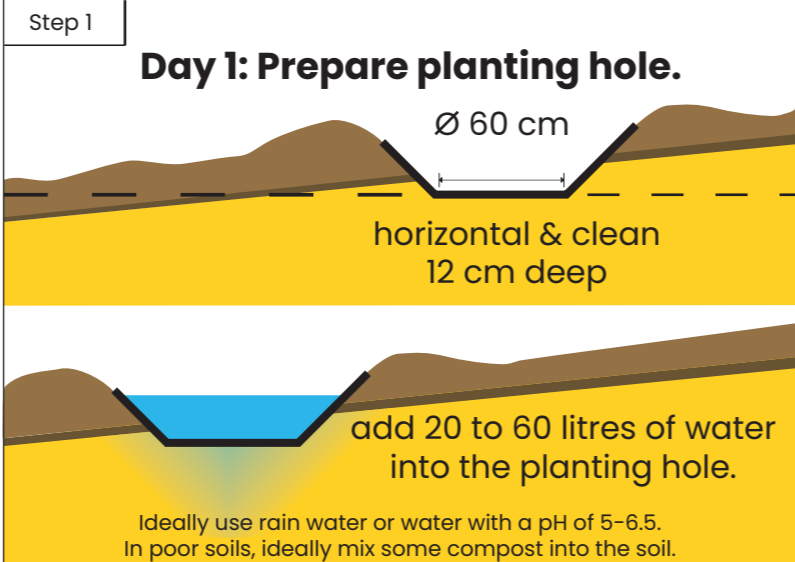




Waterboxx® instruction manual for planting trees and shrubs

Only use Groasis official products.



Download the Groasis app and planting manuals

Planting manual
 العربية ليويد
 रोपण मैनुअल
 种植手册
 Mwongozo wa kupanda
 Dikim el kitabi
 Manual de siembra
 Manual de plantação
 Manuel de plantation
 Handleiding om te planten

Once new branches have formed carefully lift off the Waterboxx®.

Protect the tree(s) with a layer of paperboard / sand / cloth / hay / rocks.

Questions? Share your results, discuss with other growers!

Facebook groups: <http://b.link/GreenMusketees> or <http://b.link/GroasisDiscuss>
 What's App group: <http://b.link/GroasisWhatsApp>
 Email: info@groasis.com
 Subscribe to our newsletter: <http://b.link/GroasisNewsletter>

Scan the QR-code with your phone camera and download the app for iOS or Android or visit <http://b.link/GroasisManual> for our planting manual in 5 languages.