

Datasheet for the Groasis Terracedixx

Part of the Groasis Ecological Water Saving Technology

Use the Groasis Ecological Water Saving Technology and benefit from our unique

Triple Ninety Benefit: use 90% less water, plant at 90% lower cost, and enjoy a 90% survival rate.*

[Check the video to see how it works here](#)

<https://www.youtube.com/watch?v=gPn7S3yDo0E&t=>

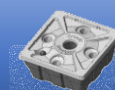
The Groasis Terracedixx makes approximately 1.5 to 15 km (depending on the slope) of mini-terraces (swales) per hour. This helps increase the infiltration of rainwater in dry seasons from app. 25% to 90%. There are 3 cutting discs for cutting organic material, 3 subsoilers making 3 grooves, 2 hollow discs make a small ridge above the lowest groove and a small canal above the middle groove. The top groove helps the rainwater to penetrate into the soil.

The machine offers the possibility to immediately sow on the ridge (Creeping Alfalfa / Miscanthus / Elephant grass and all kinds of other drought resistant grasses / Cannabis sativa - Industrial hemp (although this is not marijuana, it may be illegal in some countries to sow this) / Oil seed / Radish / Japanese Millet / etc.). A heavy drum presses the seed into the ridge to improve capillary for stimulating the germination.



Groasis Terracedixx immediately sows seeds of herbs on the terraces.

** compared to traditional irrigation methods such as drip irrigation*





Groasis Terracedixx creates 1.500 to 15.000-meter terraces per hour.

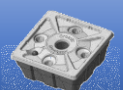


Product specifications of the Terracedixx

Colour of frame	Red
Colour of mounted parts	Green
Colour of discs	Black
Dimensions L x W x H (mm)	4690 x 2000 x 1450
Weight	1650 kg
Hitch point CAT 2 and 3	Upper Ø 25 – 32
(3 point)	Lower Ø 28 – 36
Frame constructions tubes	120 x 60 x 6.3 cm
	100 x 100 x 8 cm



3 discs for cutting organic material	3 rows – distance 400 mm
	Centre width 400 mm (2x)
	Disc Ø 510 mm
	Protection against stones in upward direction with spring
	Depth under lower hitch point 340 or 390 (mm)
3 Subsoiler-dents	3 rows – distance 400 mm
	Centre width 400 mm (2x)
	Protection against stones with hydraulic cylinder: pressure regulation and hydraulic accumulator
	Depth adjustable
	Angle adjustable
	Depth under lower hitch point 430 or 500 (mm)
First hollow disc plough	Ø 660
	Pivotally with hydraulic cylinders
	Able to left – right ploughing
	Protection against stones with hydraulic cylinder: pressure regulation and hydraulic accumulator
	Disc angle adjustable (vs driving direction)
	Depth under lower hitch point 390 (mm)
Second hollow disc plough	Ø 710
	Pivotally with hydraulic cylinders
	Able to left – right ploughing
	Distance between first and second disc: 930 mm
	Protection against stones with hydraulic cylinder: pressure regulation and hydraulic accumulator
	Disc angle adjustable (vs driving direction)
	Depth under lower hitch point 415 (mm)
Sower machine (seeder)	GANDY P45 Forage
	Command electrical 12VDC (motor drive)
	Sowing on the ridge
	Position of seeding nozzle changes (left – right) with hydraulic cylinder
	According to ploughing direction
Diabolo drum (double)	Presses the seed into the soil of the ridge to stimulate germination with a better capillary without changing the form of the ridge
Working depth regulation wheels	Wheel Ø 500 x 150 steel (2x)
Required power	120HP – 88 kw
Electrical (seeder)	12VDC – 4A
Hydraulic lifting system	Standard
Hydraulic coupling system machine	Operating pressure max. 50 bar (700 psi)





For prices and availability please contact your local Groasis distributor, or contact Groasis (info@groasis.com) directly.

Disclaimer:

Groasis B.V., its affiliates, agents, and employees, and all persons acting on its or their behalf (hereinafter each separately and all together being referred to as 'Groasis') disclaim any and all liability for any errors, inaccuracies, deviations and/or incompleteness contained in any datasheet or in any other disclosure relating to any product of Groasis.

It is the customer's and/or end-user's responsibility to validate that a particular product is suitable for use in a particular application. Parameters and/or specifications provided in datasheets or in any other disclosure relating to any product of Groasis may vary in different situations and performance may vary over time.

All specifications and/or parameters, including typical parameters, must be validated for each customer/end- user application by the customer's or end- user's technical experts. Any actual or theoretical product specifications do not expand or otherwise modify Groasis' General Terms and Conditions of Trading, including but not limited to the warranty expressed therein.

Planting manual
 الزراعة دليل
 रोपण के मैनुअल
 種植手冊
 Mwongozo wa kupanda
 Dikim el kitabi
 Manual de siembra
 Manual de plantação
 Manuel de plantation
 Handleiding om te planten



Read the planting manual in our Groasis Waterboxx[®] app, which can be found in Google Play or the Apple App store.

Groasis' General Terms and Conditions of Trading can be found [here](https://www.groasis.com/general-terms-and-conditions/) (<https://www.groasis.com/general-terms-and-conditions/>).

Website	http://www.groasis.com
YouTube channel tree planting	https://www.youtube.com/user/Groasiswaterboxx
YouTube channel vegetables planting	https://www.youtube.com/user/Groasisvegetables
Document validity date	December 31, 2023
Document version	2

